

ORTen

Training Catalogue

Digital solution for O&P



Table of contents

LIST OF TRAINING MODULES.....	4
Module: ORTEN tools	5
Module: Spinal support orthosis - Standing patient	5
Module: Spinal support orthosis - Lying patient	6
Module: CTM spinal orthosis - Idiopathic scoliosis	6
Module: Lower limb orthosis (AFO / KAFO)	7
Module: Lower limb prosthesis socket (AK/BK)	7
Module: Sitting position	8
Module: Vertical or horizontal positioning	8
Personnalized module	9
 More information on ORTEN trainings	 10

Computer-aided design of orthopaedic devices guarantees efficiency and performance.

Orten training courses, organized and designed by clinical and technical specialists, will provide you with the education, practical information and support you deserve.

With Orten, get off to a good start and be efficient in your custom-made design processes.

To this end, our training catalogue is complete and allows everyone to appropriate the tools. We are also at your disposal to organize an individualized training course on request.



LIST OF TRAINING MODULES



Module: ORTEN tools



OBJECTIVES

At the end of the course, the trainee will be able to :

- Scan a shape or model a trunk and share the data via e-Box
- Master OrtenShape tools
- Practice on concrete cases

PREREQUISITES

No

PROGRAMME

Installation and functioning

- Installing and getting started with the software
- Sharing files
- Updating software

e-Box management

- Create your profile and manage your license

Orten3DCam initiation

- Scan
- Model the shape of the patient

OrtenShape initiation

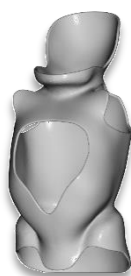
- Understand the interface
- Understand and master the functioning of the tools
- Starting with a scan, preparing it for rectification (from a trunk brace case)
- According to your practices, carry out a 2nd case (lower limb prosthesis, positioning with multiple disabilities, emergency equipment - lying patient, etc.)

Duration : 6 hours

Location: Face-to-face or distance learning

Reference : FA-1

Module: Spinal support orthosis - Standing patient



OBJECTIVES

At the end of the course, the trainee will be able to :

- Scan or model the trunk (with or without the head) of a standing patient
- Design the rectified shape of the trunk brace or neck brace, ready to be milled or 3D printed

PREREQUISITES

The trainee knows how to use Orten3DCam and OrtenShape.

PROGRAMME

Orten3DCam

- 360° scan

OrtenShape

- 360° scan cleaning
- Measurement control
- Changes in patient posture
- Symmetries (2D / 3D)
- Application of regions, use of region templates and registration of new templates
- Application of trimlines, use of trimline templates and registration of new trimlines

Duration : 3 hours

Location: Face-to-face or distance learning

Reference : FA-2

Module: Spinal support orthosis - Lying patient



OBJECTIVES

At the end of the course, the trainee will be able to :

- Scan or model the trunk (with or without the head) of a lying patient
- Design the rectified shape of the trunk brace or neck brace, ready to be milled or 3D printed

PREREQUISITES

The trainee knows how to use Orten3DCam and OrtenShape.

PROGRAMME

Orten3DCam

- Multiple scans (front and profile)
- Full face scan and Model
- Scan with vacuum mattress

OrtenShape

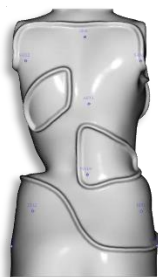
- Cleaning the scan(s)
- Alignment of the 2 shapes
- Removal of the overlapping areas of the 2 scans
- Merging scans
- Measurement control
- Changes in patient posture
- Symmetries (2D / 3D)
- Application of regions, use of region templates and registration of new templates
- Application of trimlines, use of trimline templates and registration of new trimlines

Duration : 3 hours

Location: Face-to-face or distance learning

Reference : FA-3

Module: CTM spinal orthosis - Idiopathic scoliosis



OBJECTIVES

At the end of the course, the trainee will be able to :

- Scan or model the trunk (with or without the head) of a patient with scoliosis
- Design the rectified shape of the CTM brace, ready to be milled or 3D printed

PREREQUISITES

The trainee knows how to use Orten3DCam and OrtenShape.

PROGRAMME

Orten3DCam

- Scan

OrtenShape

- Cleaning the scan(s)
- Measurement control
- Changes and corrections to the patient's posture
- Symmetries (2D / 3D)
- Application of regions, use of region templates and registration of new templates
- Application of trimlines, use of trimline templates and registration of new trimlines

Duration : 3 hours

Location: Face-to-face or distance learning

Reference : FA-4

Module: Lower limb orthosis (AFO / KAFO)



OBJECTIVES

At the end of the course, the trainee will be able to :

- Scan a patient
- Design the rectified shape of the AFO/KAFO, ready to be milled or 3D printed

PREREQUISITES

The trainee knows how to use Orten3DCam and OrtenShape.

PROGRAMME

Orten3DCam

- Patient scan
- Possible use of a foam box or glass plate

OrtenShape

- Cleaning the scan(s)
- Alignment of scans
- Removal of the overlapping areas of the 2 scans
- Merging scans
- Measurement control
- Modifications and corrections of deformations
- Optimization of the final shape for manufacturing

Duration : 3 hours

Location: Face-to-face or distance learning

Reference : FA-5

Module: Lower limb prosthesis socket (AK/BK)



OBJECTIVES

At the end of the course, the trainee will be able to :

- Scan a patient or model a femoral socket
- Design the rectified shape of the socket, ready to be milled or 3D printed

PREREQUISITES

The trainee knows how to use Orten3DCam and OrtenShape.

PROGRAMME

Orten3DCam

- Patient scan

OrtenShape

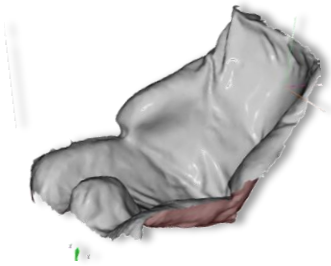
- Modelling of a femoral prosthesis socket according to measurements
- Rectification of a transtibial or transfemoral amputation
- Cleaning the scan
- Control and adjustment of measurements
- Changes
- Optimization of the final shape for manufacturing

Duration : 3 hours

Location: Face-to-face or distance learning

Reference : FA-6

Module: Sitting positioning (includes cushion)



OBJECTIVES

At the end of the course, the trainee will be able to :

- Scan or model the seat brace according to the patient's measurements
- Design the rectified form of the seat brace, ready to be milled

PREREQUISITES

The trainee knows how to use Orten3DCam and OrtenShape.

PROGRAMME

Orten3DCam

- Patient scan
- Scan of a vacuum mattress

OrtenShape

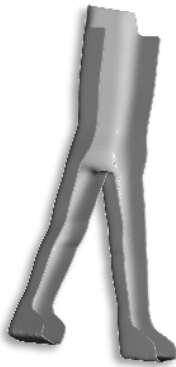
- Modelling based on patient measurements
- Cleaning the scan(s)
- Alignment of scans
- Removal of the overlapping areas of the 2 scans
- Merging scans
- Measurement control
- Changes and corrections to the patient's posture
- Symmetries (2D / 3D)
- Optimization of the final shape for manufacturing

Duration : 3 hours

Location: Face-to-face or distance learning

Reference : FA-7

Module: Vertical or horizontal positioning



OBJECTIVES

At the end of the course, the trainee will be able to :

- Scan or model the standing device or mattress according to the patient's measurements
- Design the rectified shape of the standing device or mattress, ready to be milled

PREREQUISITES

The trainee knows how to use Orten3DCam and OrtenShape.

PROGRAMME

Orten3DCam

- Patient scan
- Scan of a vacuum mattress

OrtenShape

- Modelling based on patient measurements
- Cleaning the scan(s)
- Alignment of scans
- Removal of the overlapping areas of the 2 scans
- Merging scans
- Measurement control
- Changes and corrections to the patient's posture
- Symmetries (2D / 3D)
- Optimisation of the final shape for manufacturing

Duration : 3 hours

Location: Face-to-face or distance learning

Reference : FA-8

Personalized module



OBJECTIVES

At the end of the training, the trainee will master the desired theme

PREREQUISITES

The trainee knows how to use Orten3DCam and OrtenShape.

PROGRAMME

Orten3DCam

Example:

- Assistance in the design of a scan-based impression process

OrtenShape

Examples:

- Help in creating custom region templates
- Help in creating custom trimlines templates
- Help in creating a customised socket collar
- Or any other specific request outside the existing modules.

Duration : 3 hours

Location: Face-to-face or distance learning

Reference : FA-0

More information on ORTEN trainings

- *How to register for a training?*

To register for a training, send an email to cs@proteor.com to place the order, specifying your offer and the modules you choose.

We will then come back to you to plan the training according to your availability and that of our trainers. The training will be carried out after we have received the amount of the order.

- *How do the trainings work?*

All our trainings can be conducted at your premises, at our premises, or remotely on TEAMS.

We recommend trainings with a maximum of 3 trainees so our trainer can spend time with each trainee on different examples in order to get used to the tools.

- *Who will benefit from Orten training?*

The trainings are aimed at your employees who use Orten tools on a daily basis.

- *Your responsibility for a good training*

For each module, the initial level (prerequisite) is indicated so that the training can be carried out in the best conditions for each participant. It is your responsibility to ensure that any participant registered for an ORTEN training meets the prerequisites indicated on the training module. Proteor cannot therefore be held responsible for any mismatch between the training course and the initial level of the participants.